

CanTrack™ Asset – equipment and asset telematics solution

A comprehensive equipment and asset telematics solution for the remote management of valuable assets, critical infrastructure and items at risk of theft

There's no installation requirement with the CanTrack Asset unit, so it's easy to use and with a battery life of up to 15 years, it offers long term management of your valuable assets. The unit has an exceptionally strong construction making it suitable for use in all weathers and heavy industry. It also has a range of sensors providing vital management information for reporting and monitoring – whether for Health & Safety, equipment damage or Supply Chain logistics.

🔍 Low cost solution

With zero installation and maintenance costs, you will enjoy considerable cost savings and administrative overheads over rival products, resulting in a rapid return on investment.

🔍 Remote sensors

Enabling the monitoring of theft, damage and Health & Safety information, such as temperature, equipment damage, over-turn, light, unauthorised movement from a location and minute-by-minute asset utilisation reports.

🔍 Utilisation sensing

With this subscription bolt-on, the CanTrack Asset is the only battery powered telematics units to provide remote, wireless run-time hour meter detection enabling businesses to report accurate utilisation and intelligently service assets.

🔍 GPS locations daily

Highly accurate location and information updates from your remote assets at pre-determined times. For example, a location report from all assets can be set at 8am and 4pm each day.

🔍 Ultra-long battery life

With up to 15 years reporting from the built-in battery and a near indestructible unit design, once installed, there's no need for you to go to the unit for charging or maintenance.

🔍 Inclusive finder service

In the event of theft, you have free access to the UK's only private tracking investigation team. CanTrack's people on the ground make a real difference to a successful outcome. Our statistics of 90% of equipment recovered, 80% within the first 8hrs, underlines this.

🔍 EU communication subscription

The annual subscription comes with full European roaming, included as standard, and embedded in the service is an API, which enables you to feed the CanTrack Asset data straight into your existing hire, management and asset systems for true integration.

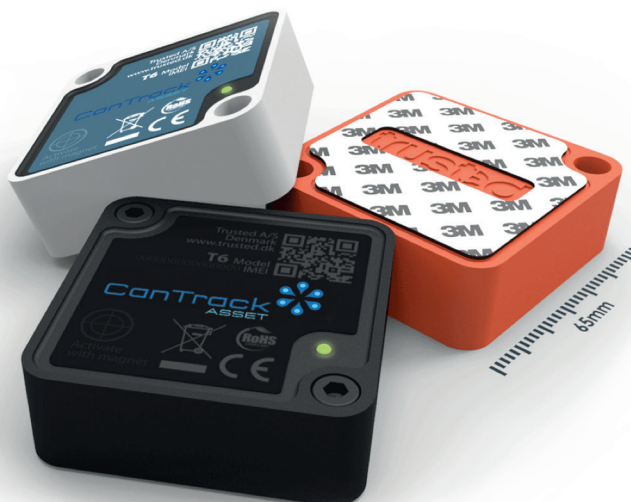
🔍 Scheduled Hours

Our unique schedule of sensor arming allows users with this subscription bolt-on to apply the CanTrack Asset's sensors to specific times of day for timely information and battery optimisation.

FEATURES



Scan here for an example of the technology



Stay connected

Unique latest generation E-SIM technology will connect to any phone network in any country, meaning the CanTrack Asset will always be able to send the information you need, wherever it is.

Ultra-durable design

The CanTrack Asset is constructed with a Nylon Polymer outer shell, with purpose built circuitry potted in epoxy resin creating a 100% solid device. It's ultra durable and will withstand the most heavy duty of business applications whilst retaining a small size.

Tested to (in)destruction

Wide range of accreditations from CE to Drop, Vibration, EMC, IP69K (highest possible rating meaning fully waterproof to pressure wash) underlines extreme quality.

Ultimate in security

Technology within the unit defeats the tools used by professional thieves such as jammers and detectors, with automatic fail-back systems and a homing beacon for location indoors which cannot be achieved with GPS alone.

Simple Installation

Fit in 5 minutes with purpose cut 3M[®] adhesive pad or bolt & bushings (supplied). Shear bolts also available for non-removable fitting requirements.

QR code data

The QR barcode on the label enables equipment to be tested in-situ, and even information on the attached asset to be entered such as fleet number, make and model reducing administrative support required from a central team.

Unrivalled battery performance

With up to 6 years from the smaller T7 and up to 15 years from the larger T9, the CanTrack Asset offers battery performance never seen before. Can be stocked indefinitely until magnet activation with no battery loss for larger users who need to manage staged rollout.

GENERAL	
Communication Modes	GPRS/EDGE/HSPA and CDMA 1xRTT packet data, UDP and SMS
SIM Card	Embedded SIM (E-SIM), subscription required No home network, Global Roaming
Operating Bands (MHz)	Quad-band (850/900/1800/1900)
Location Technology	50 channel GPS, Triangulated Cell Position, 100mw Marshall 434MHz transceiver
Battery	Lithium: 6000mAh for T7 (>5yrs at 1 position per day) and 12000mAh for T9 extended battery versions (>10yrs at 1 position per day)
Sensors	Temperature, Light, Impact, Motion, Tilt, Utilisation
ENVIRONMENTAL	
Temperature	-30° to + 85° C (operating), -40° to +85° (storage)
Humidity	100% Relative Humidity including condensing
Shock and Vibration	BS EN 60068-2-32:1993 (Shock) and BS EN 60068-2-6:2008 'Vibration (sinusoidal)', BS EN 60068-2-29:1993 (Bump)
Environmental Protection	IP69k -Fully waterproof and dust proof, capable of withstanding direct high pressure wash
EMC / EMI / ESI / RTTE	CE (directive 2004/108/EU & 2014/30/EU & RTTE Directive 1999/5/EC & Directive 2014/53/EU
RoHS Compliant	
PHYSICAL	
Dimensions	68 x 68 x 25mm for T7 and 115 x 68 x 38mm for T9 extended battery version
Weight	170g for T7 and 400g for T9 extended battery version
Enclosure	PA6 Nylon Polymer with circuitry potted in epoxy resin

CommercialFleet
AWARDS 2017
FINALIST



Everything we do, we believe in | cantrack.com
If you would like to find out more call +44 (0)1908 330 385

CanTrack is a registered trade mark of CanTrack Global Ltd